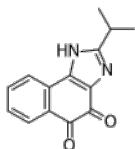


**Product Name** : KL1333  
**Cat. No.** : PC-24962  
**CAS No.** : 1800405-30-4  
**Batch No.** : PC-2496201  
**Chemical Name** : 2-isopropyl-1H-naphtho[1,2-d]imidazole-4,5-dione

## PHYSICAL AND CHEMICAL PROPERTIES

**Molecular Weight** : 240.26  
**Molecular Formula** : C<sub>14</sub>H<sub>12</sub>N<sub>2</sub>O<sub>2</sub>  
**Storage** : Powder -20°C 12 Months  
4°C 6 Months  
In solvent -20°C 6 Months  
-20°C 6 Months

**Chemical Structure** :



CAS: 1800405-30-4

## ANALYTICAL DATA

**Appearance** : Solid powder  
**<sup>1</sup>H NMR Spectrum** : Consistent with  
**HPLC** : Consistent with  
**NP** : Consistent with  
**Purity (HPLC and/or LCMS)** : >98%  
**Conclusion** : The product has been tested and complies with the given specifications.

**Caution: Product has not been fully validated for medical applications. Lab Use Only!**

E-mail: tech@probechem.com